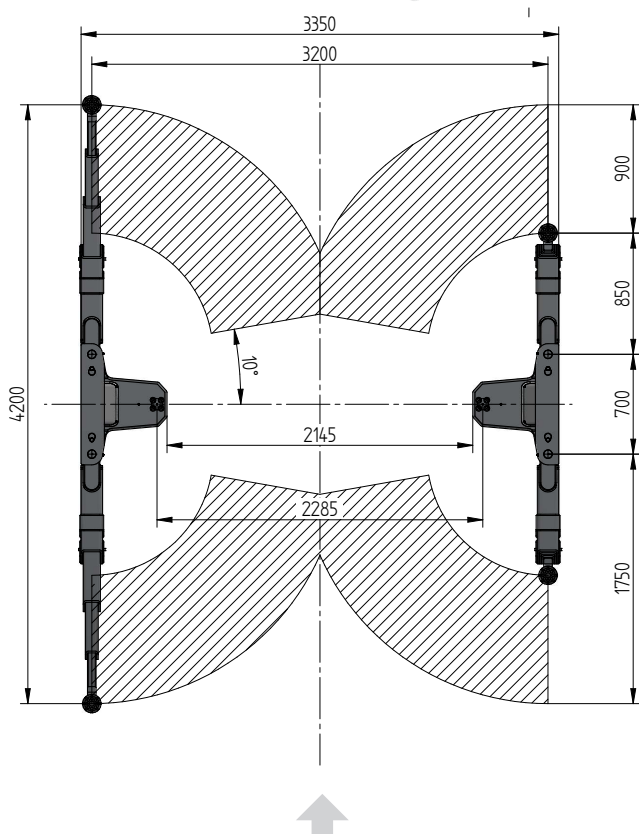
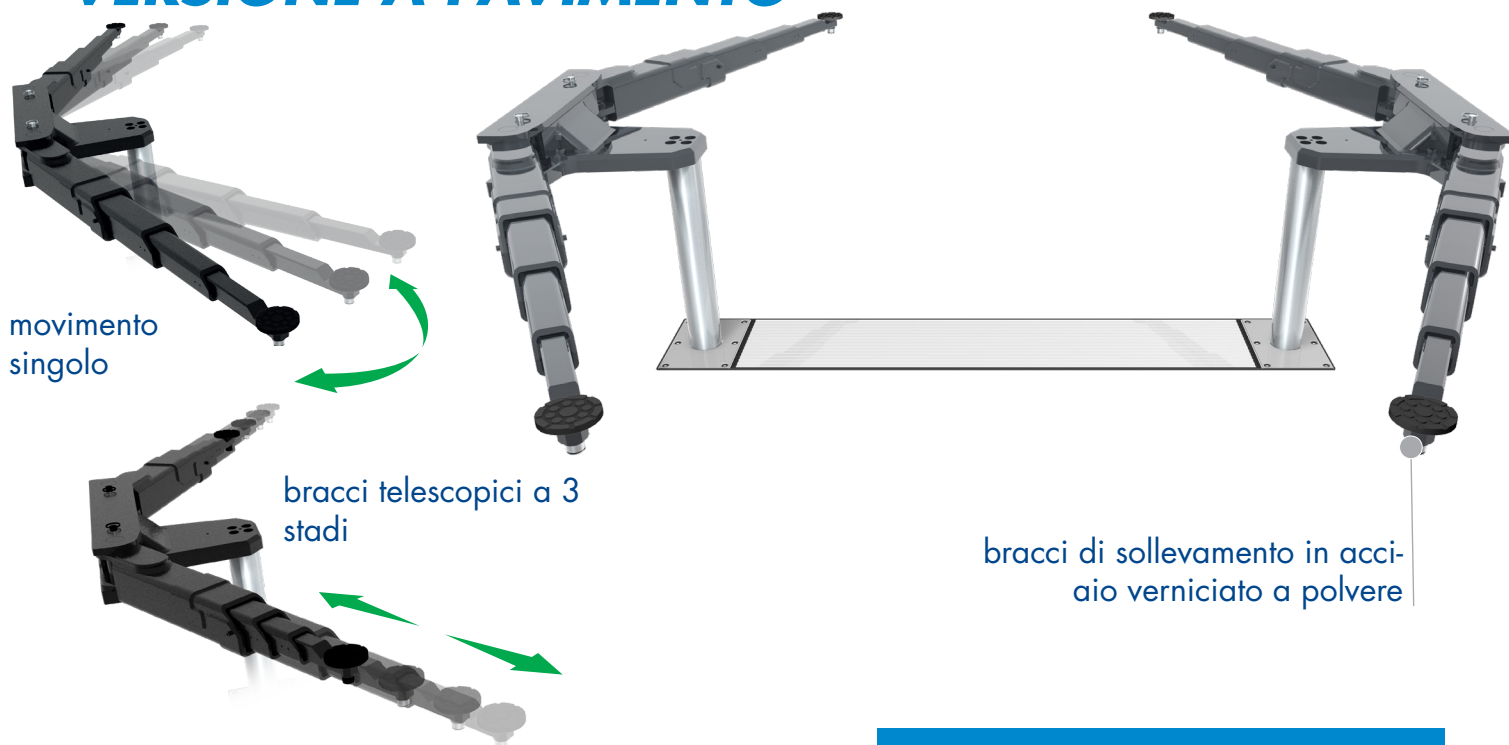


SOLLEVATORE A CILINDRI INTERRATI A 2 PISTONI

# TOP LIFT 2.50 TLK

VERSIONE A PAVIMENTO



## DATI TECNICI

Portata	5000 kg
Altezza di sollevamento	2037 mm
Altezza max. tampone	120 mm
Diametro pistone	123 mm
Distanza pistoni	2285 mm
Profondita' di installazione	2408 mm
Assorbimento motore	3,0 kW
Alimentazione	400 V/16 A
Lunghezza cavi	11 m
Tempo di sollevamento	≈ 35 sec.
Tempo di discesa	≈ 35 sec.

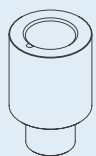
Bracci 2.50 TLK 0016800

Cassetta di installazione 2285 mm 0015744

Pistone di sollevamento 5,0 t 2285 mm - K pre-assemblato in fabbrica nella cassetta 0016590



## ACCESSORI



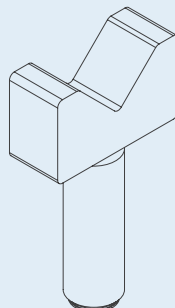
1

- 1 | Prolunga Tampone  
80 mm  
d 45 x 80 mm  
0016741 (1Set / 4 Pieces)



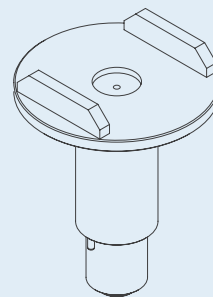
2

- 2 | Prolunga Tampone  
130 mm  
d 45 x 130 mm  
0016742 (1Set / 4 Pieces)



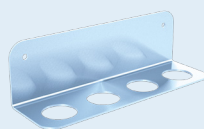
3

- 3 | Adattatore a V  
d 45 / 182 - 312 mm  
0016744 (1Set / 4  
Pieces)

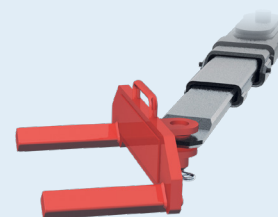


4

- 4 | Adattatore a U  
d 130 x d 45 / 193-  
295mm  
0016745 (1Set / 4  
Pieces)



- Supporto per adattatori  
0016751



- Forca per sollevamento  
sottoruota

0016753 (1Set / 4 Pieces)